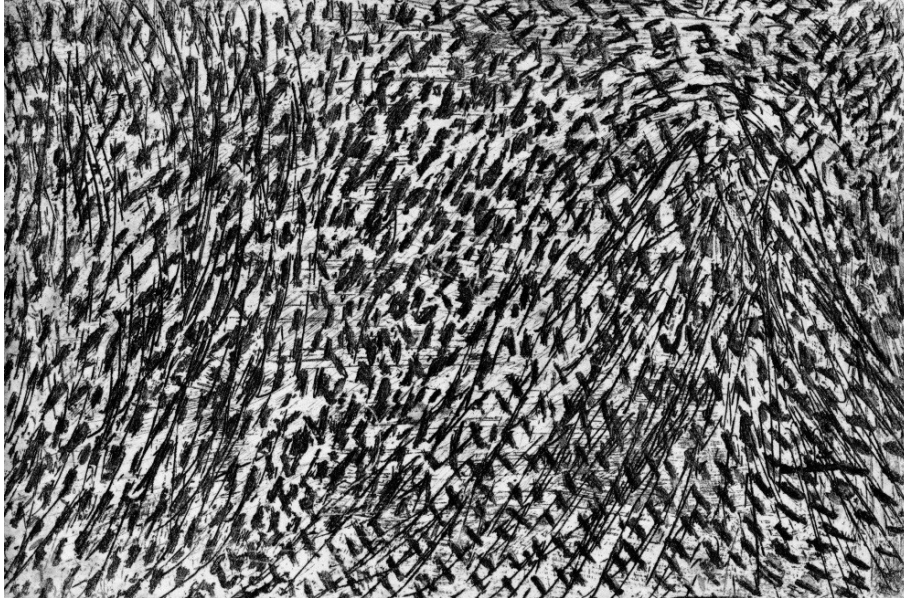
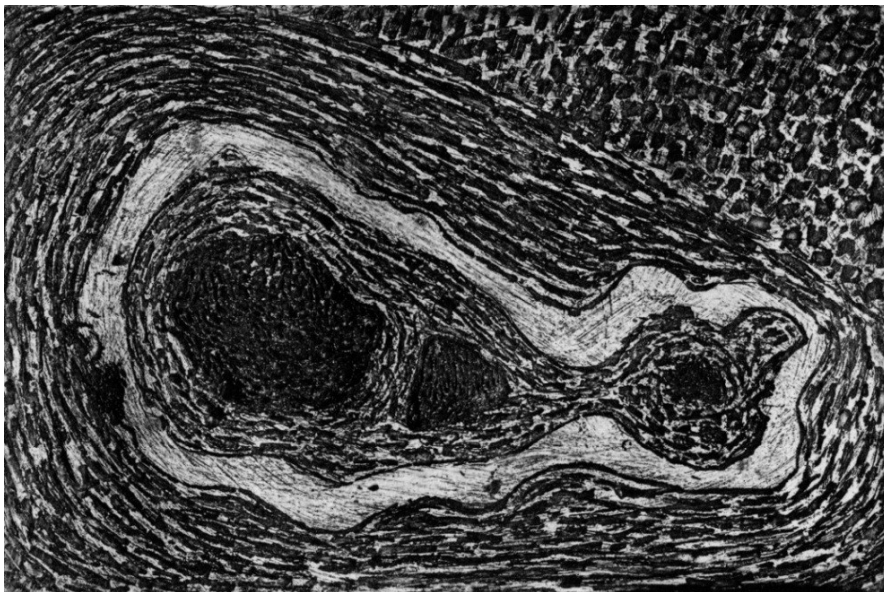

main gallery

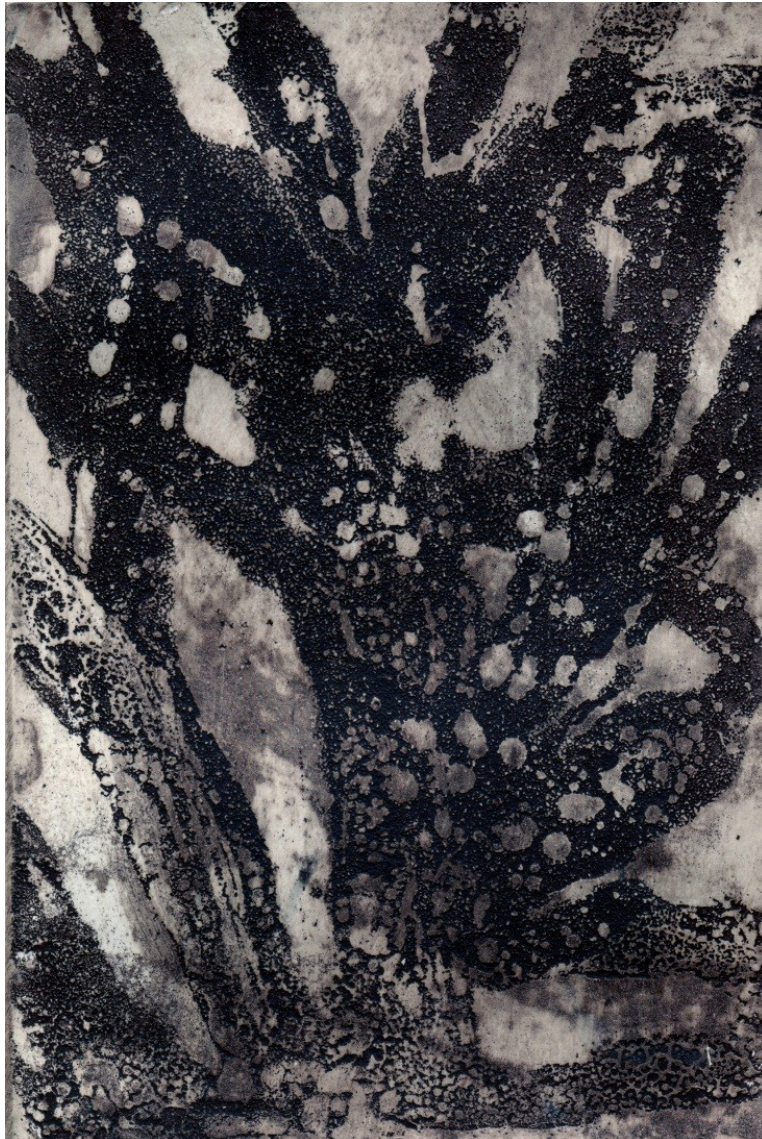


'The Dance of the Dead.' Wolli Creek. 'B&W. 6" X 4". drypoint. copper plate.

I did a somewhat abstract drawing of leaves strayed by the wind on the Mexican Day of the Dead thus the title. Whenever I go for walks through Wolli Creek I often go with my sketchbook and on this particular day this natural vibrant pattern gained my particular attention.



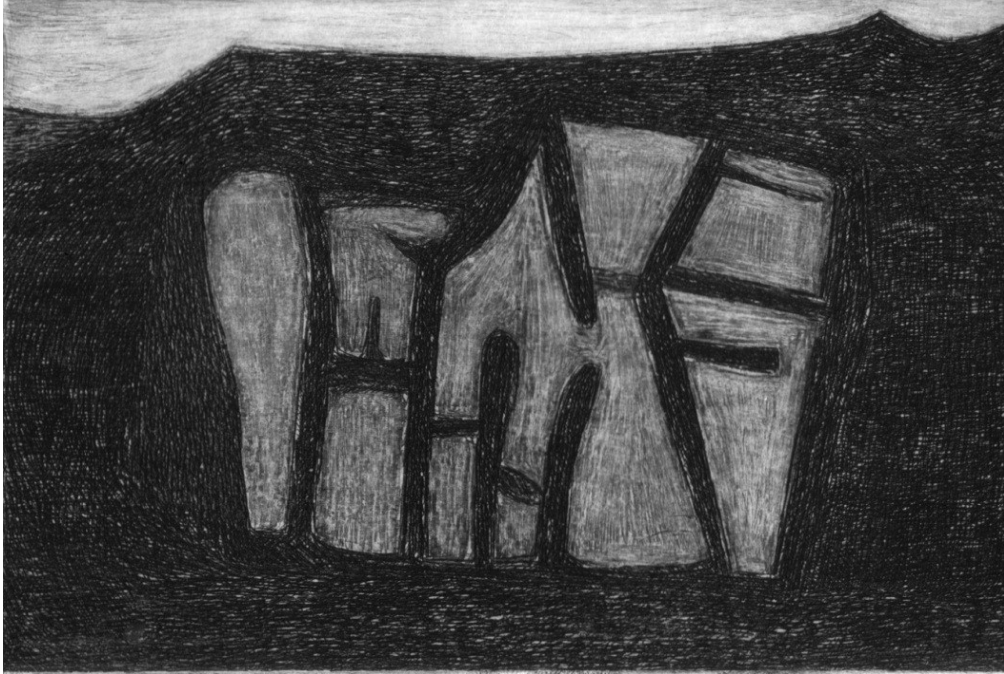
'Supernova.' Wolli Creek. B&W. 6' X 4". drypoint. copperplate.



‘That tree, the universe.’

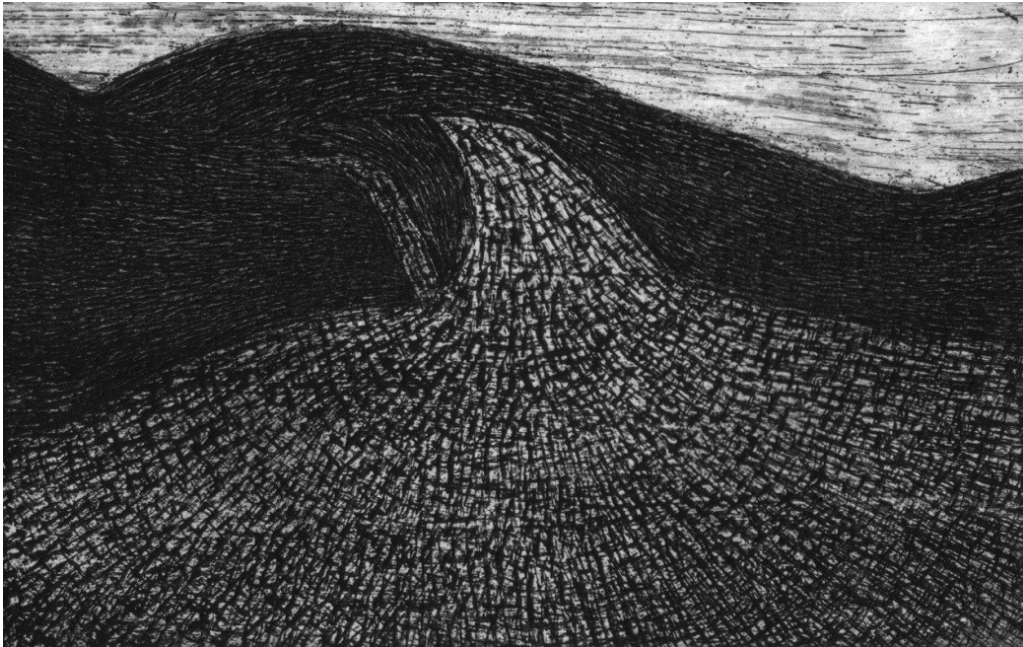
Sydney Botanical Gardens. *sepia. 6"X 4" sugarlift. aquatint. zinc plate.*

This etching is based on an idea that the universe is like a tree with the cosmos made of galaxies as its branches and stars as leaves. I think of ancient traditions of the cosmic tree and so forth. I was struck one day by the large old trees one finds in the Royal Botanical Gardens which for me typified this idea of universe as tree. There is also an old grand tree in the park beside Central Station that also leaves me in awe. Lastly, I should mention that I have read in an old school book how the tree pattern often occurs in nature such as in an electrical discharge; in the human body's blood circulation as well as in the 'tree chart' that outlines the evolution of life on this planet.

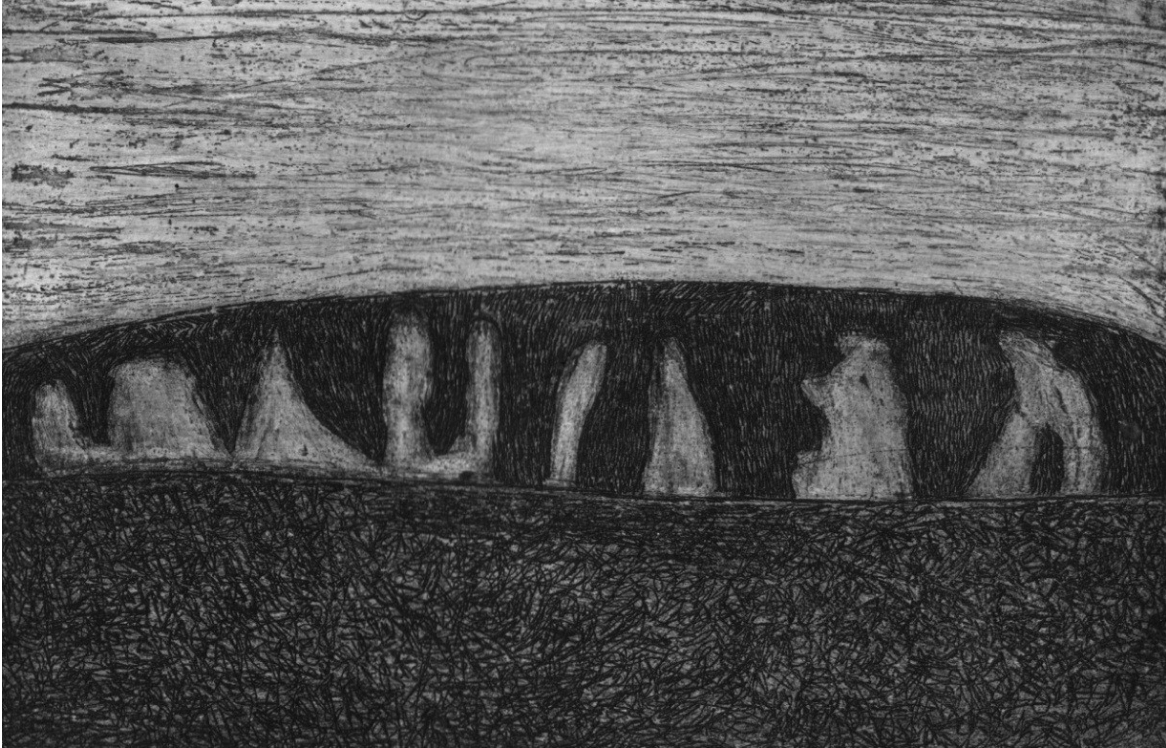


'Rockface.' Coledale. B&W. 6"X 4". drypoint. copperplate.

This work is based on one of many sketches which I had done in the early morning of the long grand escarpment behind the beach. I was struck by the sculptural quality of the rock face and of the interplay that existed between it and the translucent light falling on the cliffs. On a metaphysical level I equated what I saw with the equivalent interplay that I mindfully see happening between the spiritual and the material in our physical world. Misty Bluffs is also based on a sketch.

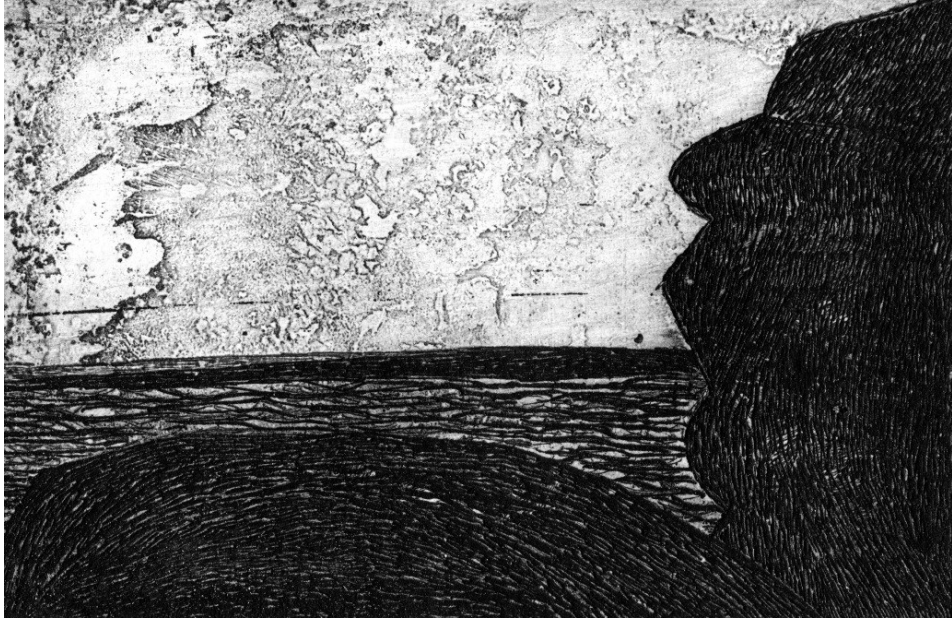


'Misty Bluffs.' Coledale. B&W. 6"X 4". drypoint. copperplate.

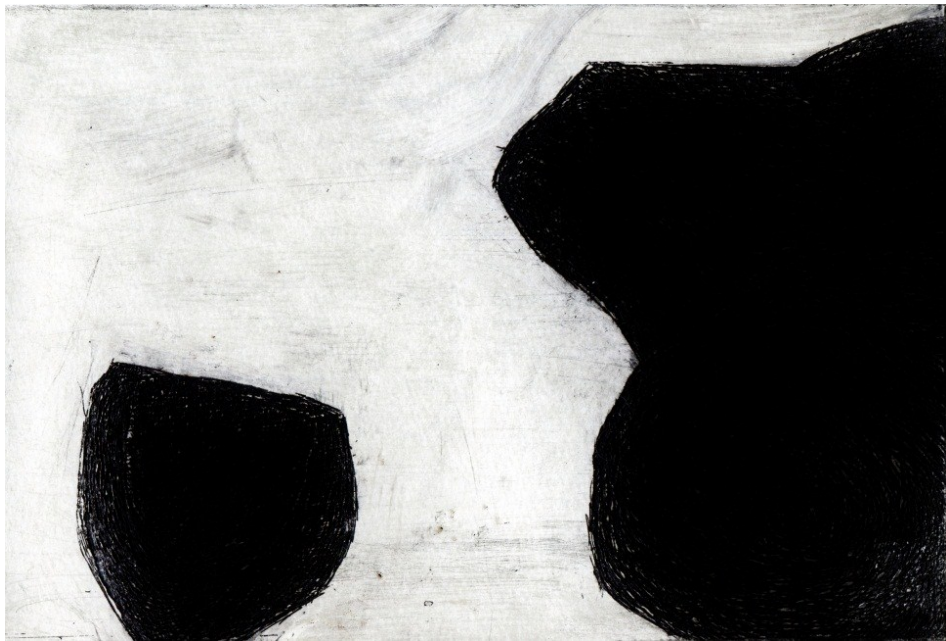


'Coledale.' Early Morning. Coledale. B&W. 6"X 4". drypoint. copperplate.

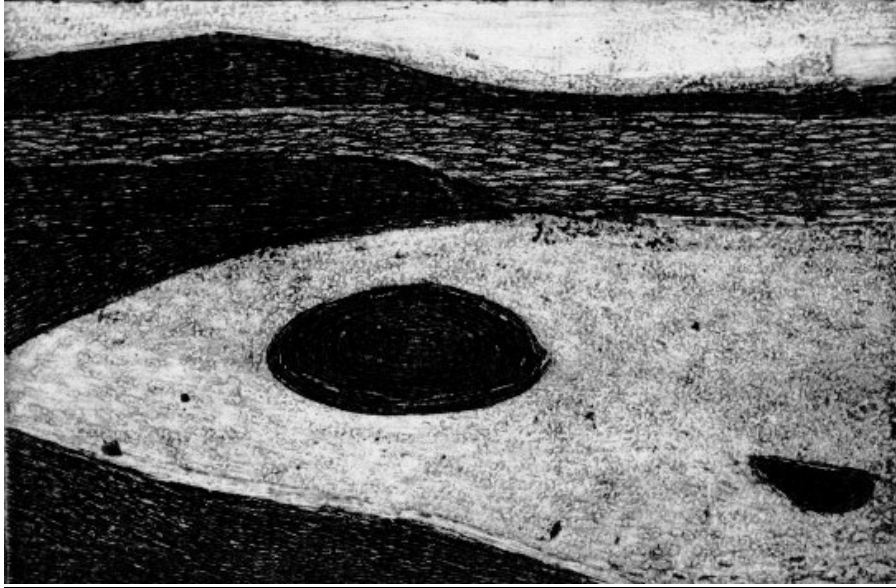
Translucent immaterial, unseen light filtering over the texture of hard, dark form: this notion is what first came to my mind when I produced this image of this stretch of the Coledale cliff face at sunrise. The constant contrast of light and dark is a subconscious element which we are always aware of in our primal memory. I was staying, one weekend, long ago, at a friend-of-a-friend's spacious light-filled house in Coledale (on the coast south of Sydney); to wake up early one Sunday morning, and - in the meditative silence - drew a series of sketches of the large protruding misty coal cliffs directly behind me. I have an ambition to capture the rather unique interplay that seems to exist to me between the spiritual and the earth (re: 'earthiness') that bears over the Australian terrain, especially in the bush. This work is one attempt towards this quest. A friend once commented to me that the light areas reminded her of Stonehenge and I could immediately recognise what she meant by this remark (and the connection that also exists between spirit and earth in this noble megalith structure with its monumental strutting lintel & pillar rings of weighty 'cairns'). The Australian landscape - in particular this enormous length of rock - also as megalith. I very much like that. *Coledale. Early Morning* along with *Rockface* and *Misty Bluffs* form a *Coledale triptych*.



'Fallen Angel.' Shelley Beach. Cronulla. *B&W. 6"X 4". copperplate.*

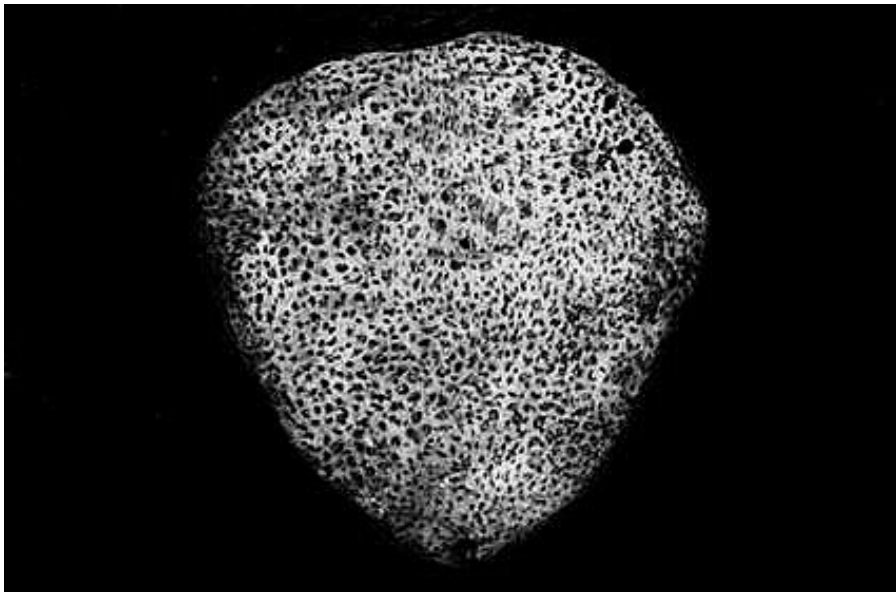


'Fallen Angel.' Shelley Beach. Cronulla. *B&W. 6"X 4". copperplate.*

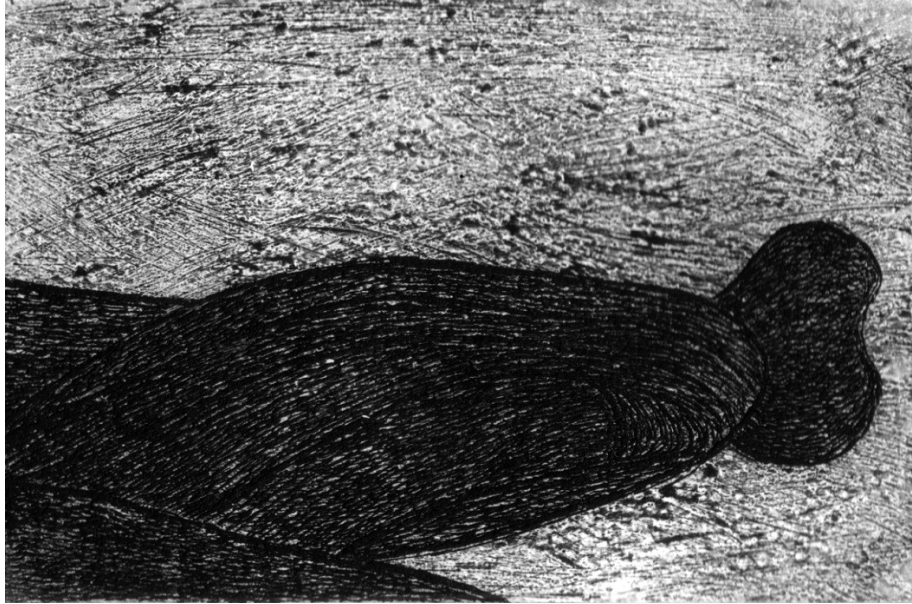


'Well of Life.' Cronulla. *B&W 6"X 4". copperplate.*

I was attracted by this large dark hole in this rock formation that I came across on the way to Shelley Beach at Cronulla. Residing within it the sea water that undulated around the contours of the rocks, shaping them. Movement; life within a still darkness. Henry David Thoreau once remarked that a lake is the 'earth's eye' it is a description which I feel also befits this smaller body of water.

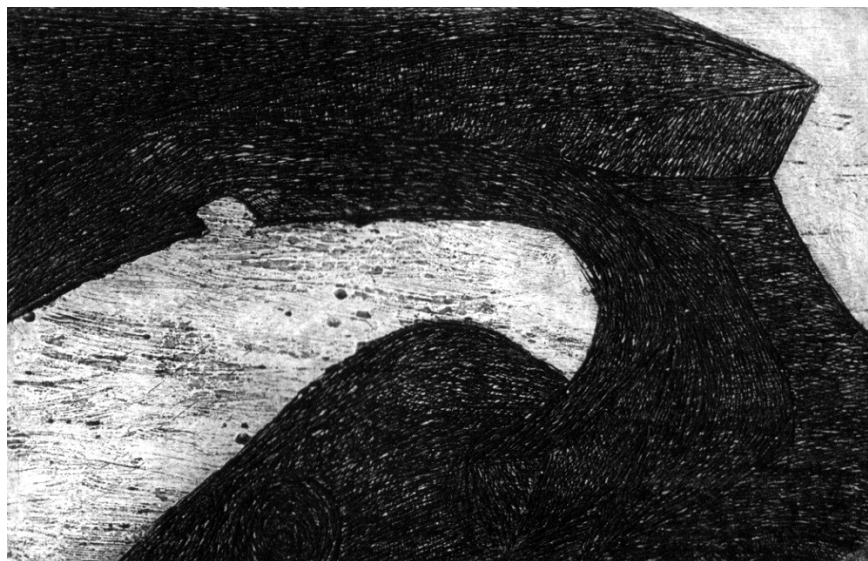


'Cosmos'. (Corpuscles of the Universe) Gordons Bay. *B&W 6"X 4". drypoint. copperplate.*



'Angel Rock.' Gordons Bay. *B&W. 6"X 4" drypoint. copperplate.*

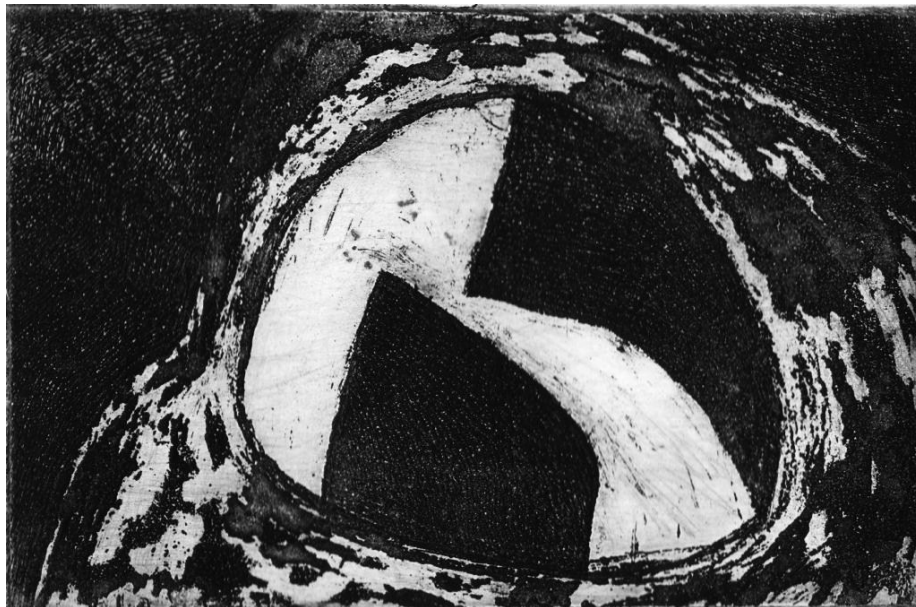
This is a strange rock at Gordons Bay. It juts out of the rocks near the beach and has always fascinated me. I like going to Gordons Bay as it is a tranquil spot squeezed in amidst the more crowded areas of Sydney's eastern suburbs coastline. Although some locals disagree I have found that at this sparsely populated inlet there is always the space to be alone. A person can pretend they are many miles down the coast and for me – in my own offbeat way of thinking – often feel that this enclosed coastal spot is not only paradise but a microcosm of the whole universe. I have done many sketches here with this somewhat 'cosmic' attitude in mind. Thus it is appropriate to find an angel in this bay. The following two etchings are also based on sketches. I should also mention that many locals call this inlet Thompsons Bay.



'Rings of Time.' Gordons Bay. *B&W. 6"X 4". drypoint. copperplate.*



'Emergence of Life.' Gordons Bay. B&W. 6"X 4". drypoint. copperplate.



'Heart of the Universe.' Gordons Bay. B&W. 6"x4" sugarlift. aquatint. zinc plate.

Gordons Bay is squeezed in between Clovelly and Coogee beaches. I like going to Gordons Bay as it is a tranquil spot amidst the more crowded areas of Sydney's eastern suburbs coastline. A person can pretend they are many miles down the coast and for me – in my own offbeat way of thinking – often feel that this enclosed coastal spot is not only paradise but a microcosm of the whole universe. I have done many sketches here with this somewhat 'cosmic' attitude in mind. I should also mention that many locals call this inlet Thompson Bay.



'Conception of the Universe with Cosmic Egg'.
Central Australia.

8" X 6" B&W. sugarlift. aquatint. zinc plate.



'Old Mangrove'. Cooks River.
Sydney.

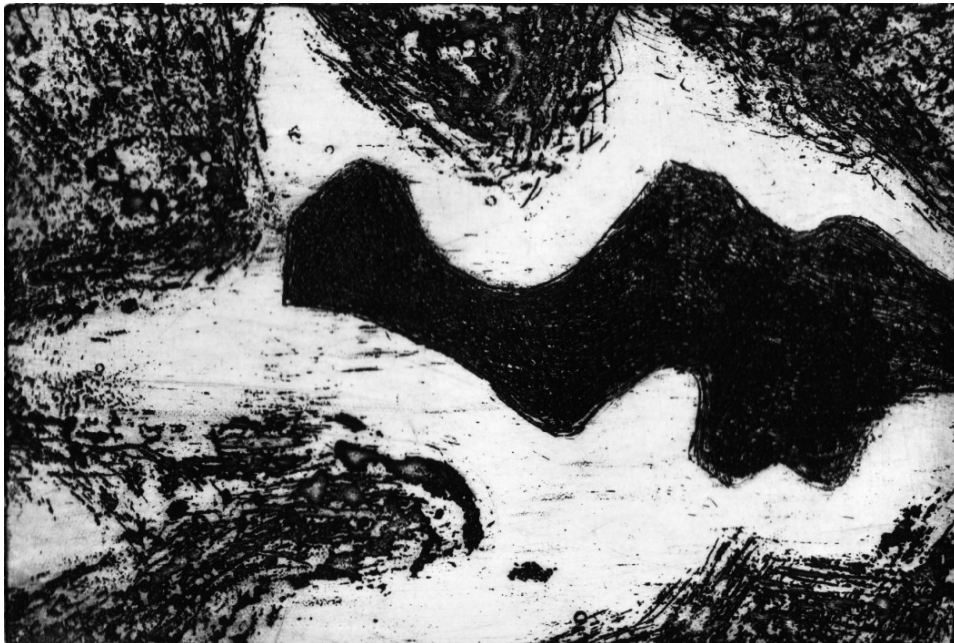
6" X 6" B&W. sugarlift. aquatint. zinc plate.



'The Birth of Zeus.'

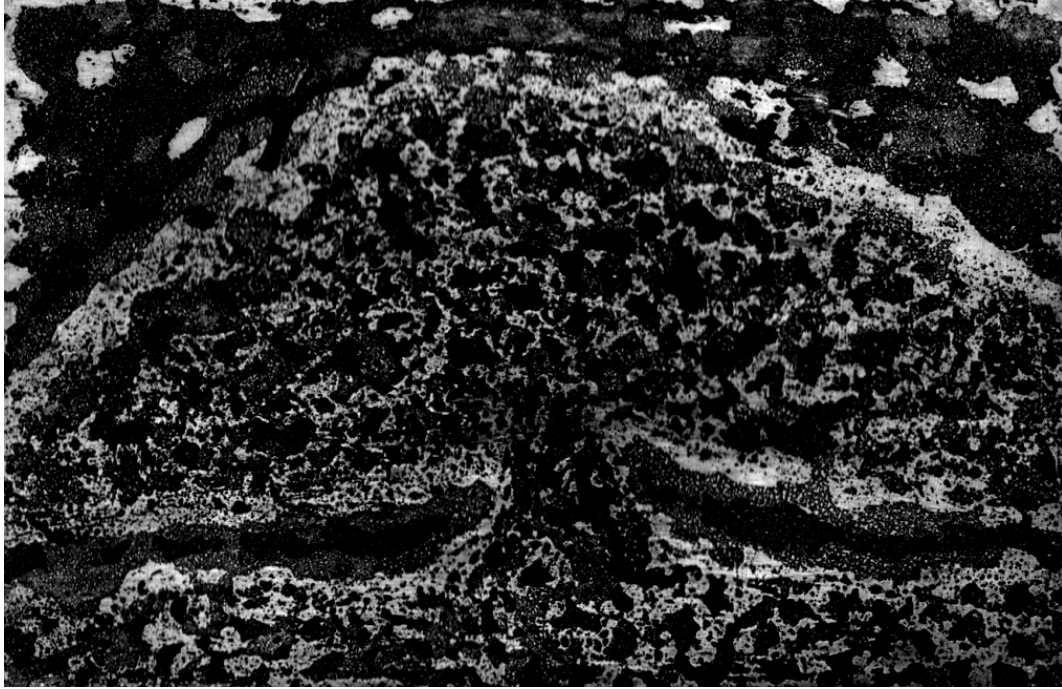
Nielson Park B&W. 6"X 4" sugarlift.
aquatint. zinc plate.

Ancient Greek legend has it that Zeus was saved from being devoured by his father the Titan Cronus by Rhea his mother who used a disguised rock to replace him. When Cronus swallowed the rock he did not suspect anything. Rhea secretly gave birth to her son in Crete. Cronus ate his children as he had been forewarned that one of them would attempt to dethrone him. As it turned out it was Zeus who achieved this feat to become lord over all the other gods. Thus I have Zeus as this grand rock which appears to be emerging from the waters off Nielson Park in the harbour at Sydney.



'Black Galaxy.'

Rock pool.
Bundeena. Royal
National Park.
B&W. 6"X 4"
sugarlift. aquatint.
zinc plate



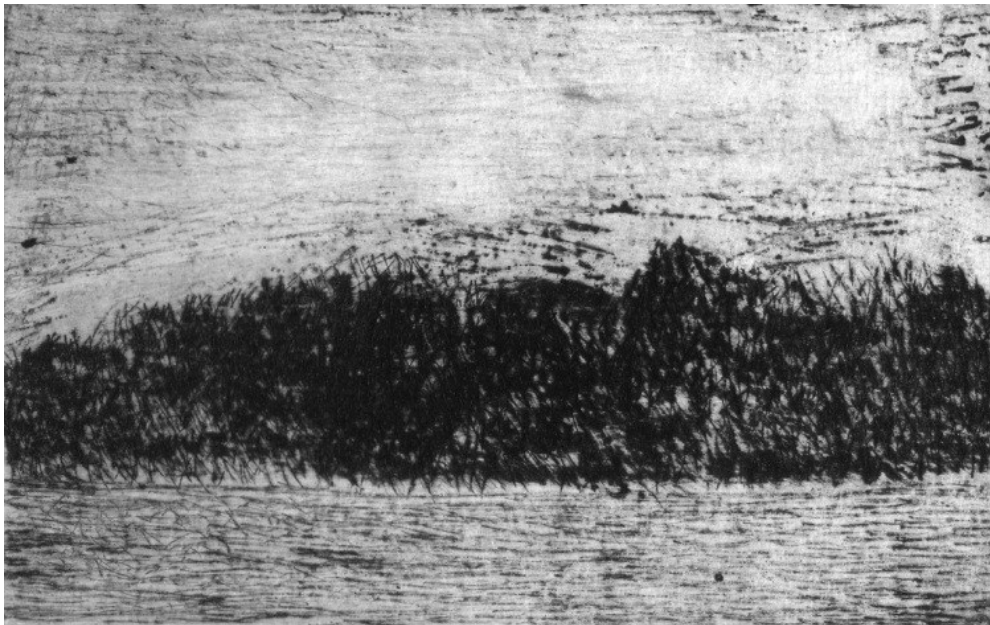
'Our Canopy, the Universe'. Blackwattle Bay. Glebe. Sydney.
B&W. 6"X 4" sugarlift. aquatint. zinc plate



'Falling Angel'. Bobbin Head National Park. 6"X 4". *sepia. sugarlift. aquatint. zinc plate*



'Curramoors'. (Mt. Purgatory). Royal National Park. 6"x 4".
sepia. sugarlift. aquatint. zinc plate.



'It Will Pass'. Cooks River. Sydney.
6"x 4". B&W. drypoint. copperplate.

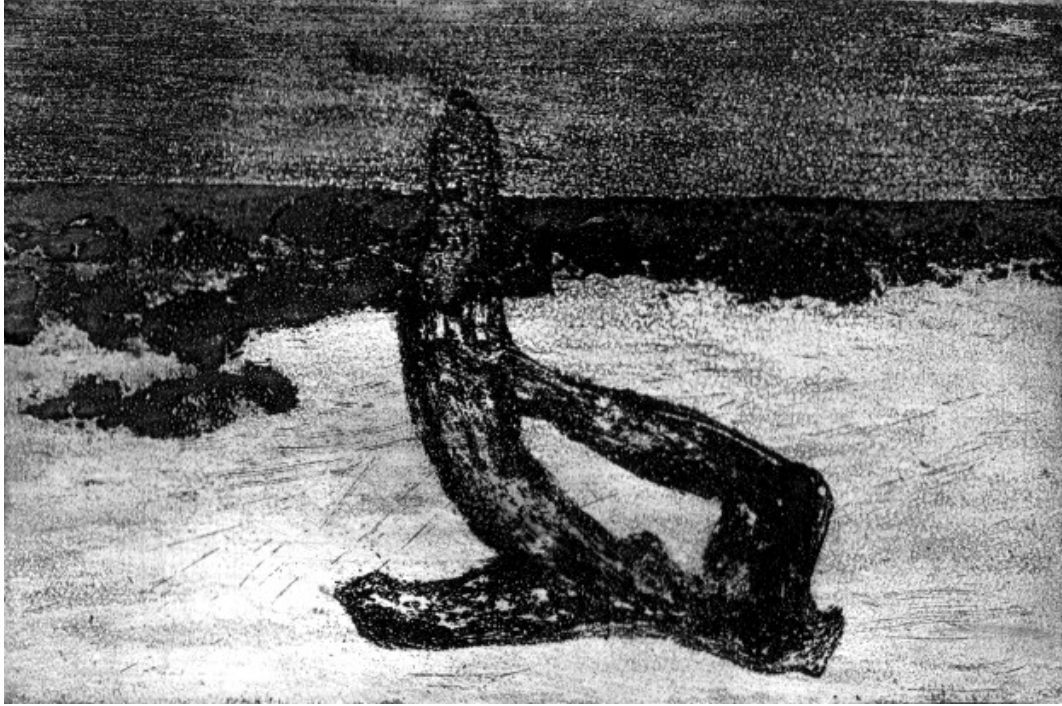
With *'It Will Pass'* I imagine the ceaseless flowing river in Herman Hesse's *Siddartha* with its 'thousandfold song'...the river's voice of experience is full of both sadness & desire; yet the current is always heading towards its goal...thus I silently consider while walking beside this calm water how any personal tribulation can eventually be overcome by entwining – in this existence – one's mental, spiritual and physical self with or to an over-riding, life-enhancing sense of a perfect 'eternal unity'.



'Zeus's Cave. (The Eye of God)'. Wollli Creek. Sydney.
6"X4" B&W. sugarlift. aquatint. zinc plate.



'Mangrove Rhythm'. Cooks River. Sydney. *6"X4" B&W. sugarlift. aquatint. zinc plate.*



'Archangel'. Big Marley Beach. (Nature's Sculpture-by-the-Sea). Royal National Park.
B&W. 6"X4" sugarlift.aquatint.zinc plate.



'Forming Galaxies'. Bulli Beach. South Coast.
B&W. 6"X4" sugarlift.aquatint.zinc plate.