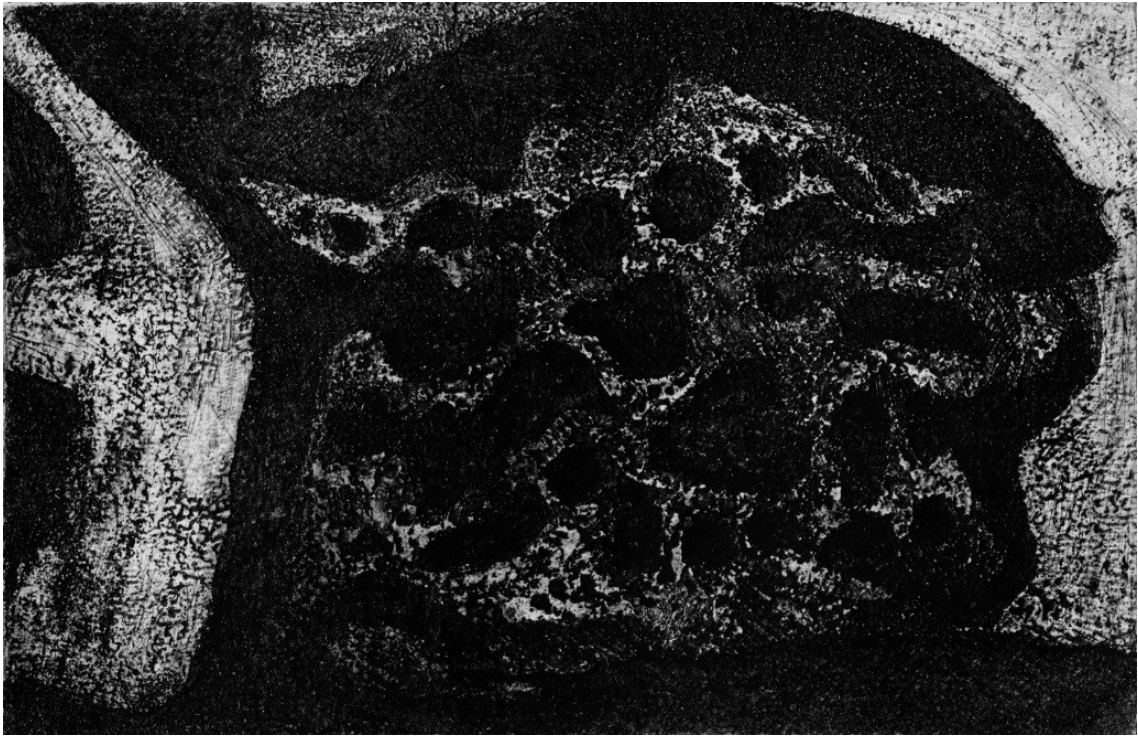


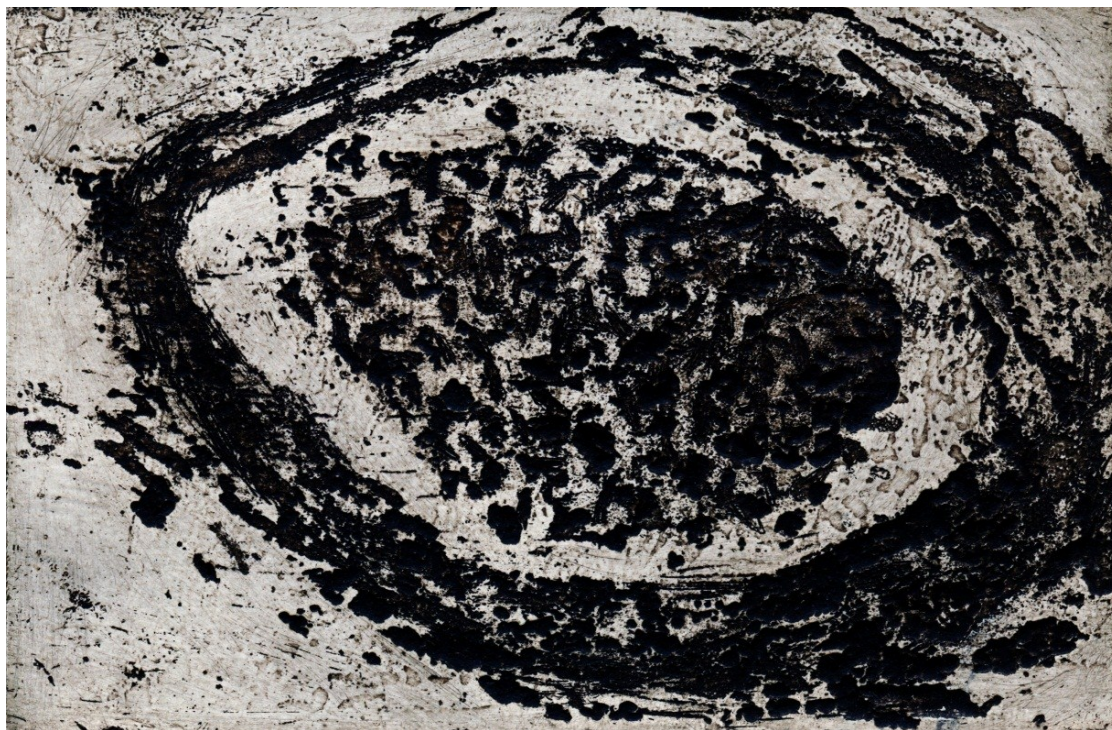
'Cosmic Currents'. Botany Bay National Park. Sydney.
6"X4" B&W. sugarlift. aquatint. zinc plate.



'Evolution of the Universe'. Bundeena. Royal National Park.
6"X4" B&W. sugarlift. aquatint. zinc plate.



'Three Fates.' Little Marley. Royal National Park.
6"X 4". sepia. sugarlift. aquatint. zinc plate



'Conception of Life'. Wombarra. South Coast.
6"X 4". sepia. sugarlift. aquatint. zinc plate.



'Archangel.' Wollie Creek. *B&W. 6"X 4" sugarlift. aquatint. zinc plate.*

Wollie Creek is a major natural bushland reserve in the inner south-west of Sydney. The etching is based on the sketch of a small tree in Wollie Creek. The tree caught the artist's eye as the main trunk opened upwards to two main branches like welcoming outspread arms.



'Mangrove Souls.' (Awaiting to go to Paradise). Cooks River.
B&W. 6"X 4" sugarlift. aquatint. zinc plate.

Cooks River is near where I live and there is a pathway alongside it to walk along. I have done a series of sketches of the river including the mangroves that line its banks. In the afternoon a gloriously splendid orange sunlight falls on the mangroves giving them an almost unearthly almost heavenly appearance; yes, it certainly gives them a spiritual quality thus the title. Furthermore, the rhythm of the rows of the thin mangrove trunks which rise up from the still water that resides by the banks of the river echo for me the cosmic currents that flow across the universe as undulating 'souls' to its explosive creation. Our souls, perhaps, to be integrated into the dynamic life force of the 'sweet cosmos' that expands beyond us our mortal world.



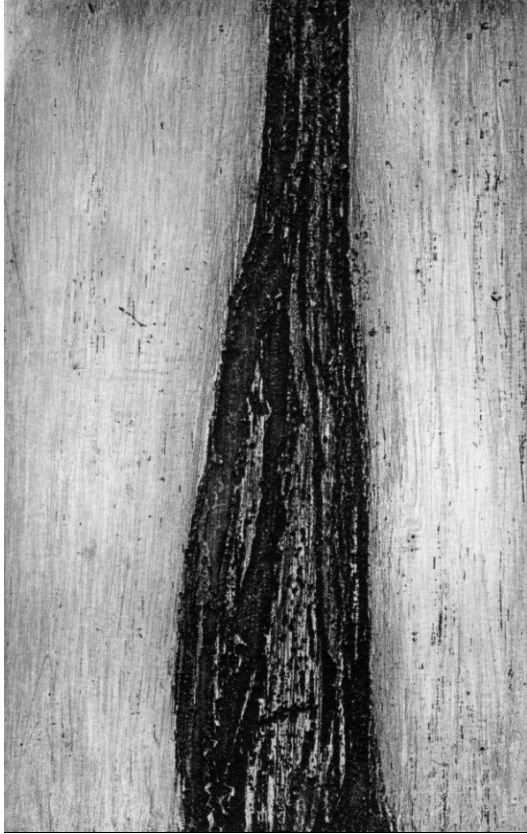
'The Last Judgement.' (Apocalypse). Wollli Creek. *B&W. 6"X 4" sugarlift. aquatint. zinc plate.*

This etching - which to me is filled with much drama and movement - is based on a dead leafless bush whose mangled ball shape was akin to an explosion burst strikingly 'busting out' from the track that goes through Wollli Creek; a bushland reserve near where I live. The title is in accordance to the spiritual/metaphysical/cosmological interpretations which I have given to many of my images of the Australian bush.



'Fallen Angels.' Wollli Creek. *B&W. 6"X 4" sugarlift. aquatint. zinc plate.*

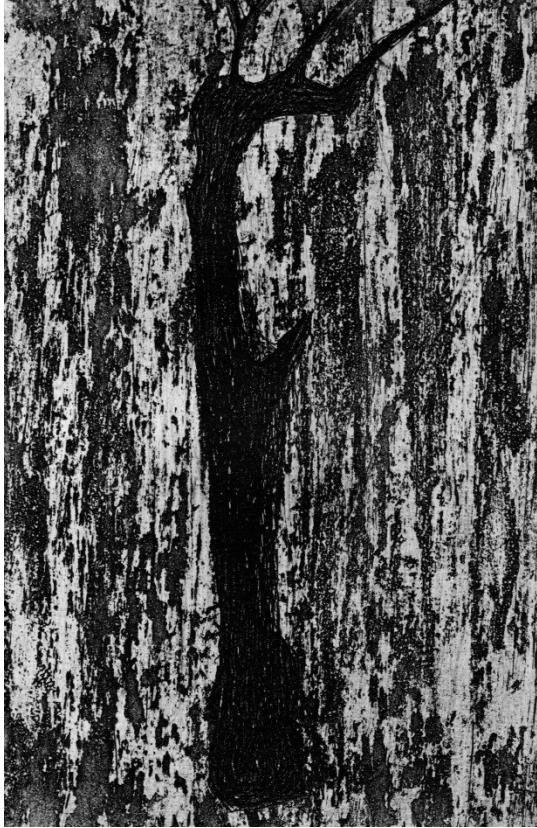
This image is based on one of many sketches based on Wollli Creek. There are several naturally fallen trees, some of them burnt out by backburning and naturally enough I have viewed them as fallen angels.



top left: 'Pillar of Time'.
Minnamorra Rainforest. Jamberoo.
6"X4" B&W. sugarlift. aquarelle. zinc plate.

top right: 'Hydra'.
Botany Bay National Park. Sydney.
6"X4" B&W. sugarlift. aquarelle. zinc plate.

bottom: 'Trojan Wall'.
Hawkesbury River. Ku-ring-ai Chase National
Park.
6"X4" B&W. aquarelle. spit bite. zinc plate.



Top left: Burnt Soul. Mougamarra Reserve. Ku-ring-ai Chase National Park.

6"X4" B&W. sugarlift. aquatint. zinc plate.

Top right: Burnt Soul. Mougamarra Reserve. Ku-ring-ai Chase National Park.

6"X4" B&W. sugarlift. aquatint. zinc plate.

Bottom: Burnt Soul. Mougamarra Reserve. Ku-ring-ai Chase National Park.

6"X4" B&W. sugarlift. aquatint. zinc plate.



top left: 'Tree Womb'.
Mougamarra Reserve. Ku-ring-ai Chase
National Park.
sepia. sugarlift. aquatint. zinc plate.

top right: 'Tree Womb'.
Mougamarra Reserve. Ku-ring-ai Chase
National Park.
sepia. sugarlift. aquatint. zinc plate.

bottom: 'Tree Womb'.
Mougamarra Reserve. Ku-ring-ai Chase
National Park.
sepia. sugarlift. aquatint. zinc plate.



'Cycle of Time.' Gordons Bay. 6"x 4". *sepia. aquatint. sugarlift. zinc plate.*



'Nebula'. Gordons Bay. 6"x4" *sepia. aquatint. sugarlift. zinc plate.*



'Emergence of Life'. Gordons Bay. Sydney. 6"X4". *sepia. sugarlift. aquatint. zinc plate.*



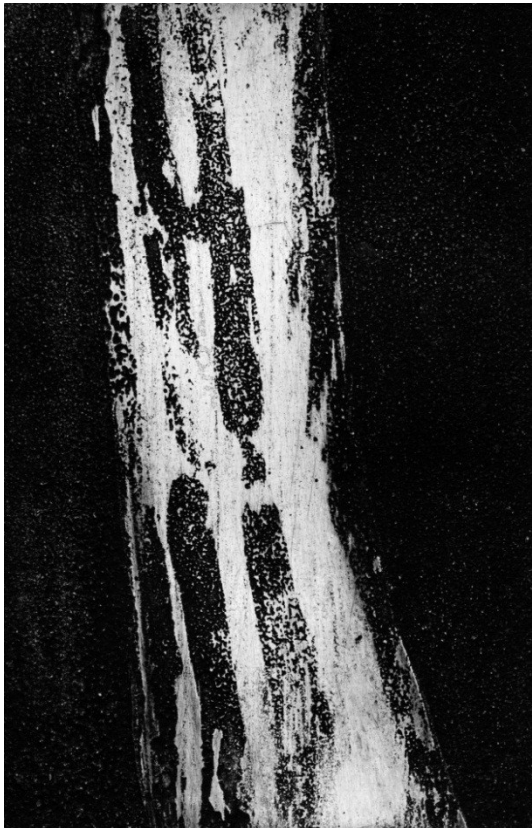
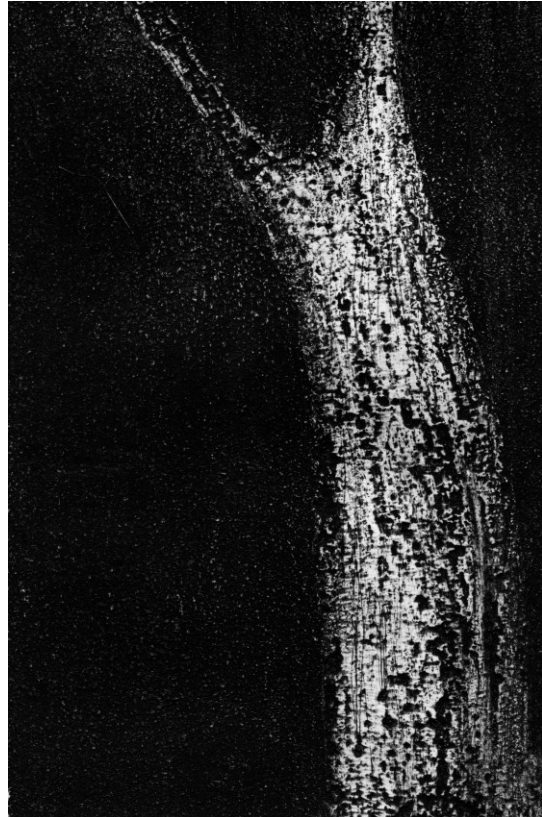
'Emergence of Life'. Gordons Bay. Sydney. 6"X4". *sepia. sugarlift. aquatint. zinc plate.*



'Ravelling of Life.' Gordons Bay. Sydney. 6"X 4". *sepia. sugarlift. aquatint. zinc plate.*



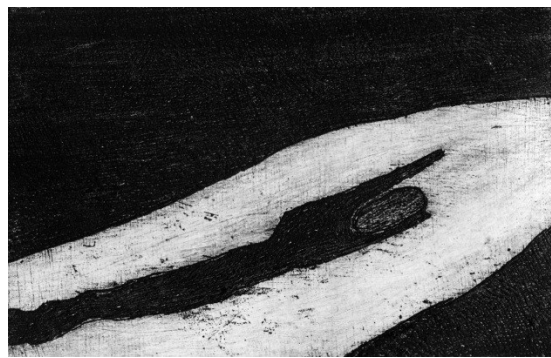
'Nebula.' Gordons Bay. Sydney. 6"X 4". *sepia. sugarlift. aquatint. zinc plate.*



top left: 'Wisdom & Youth. (Pillars of Time)'.
Minnamorra Rainforest. Jamberoo.
6"X4" B&W. sugarlift. aquatint. zinc plate.

top right: 'Misguided Angel'.
Mougamarra Reserve. Ku-ring-ai Chase National
Park. *6"X4" B&W. sugarlift. aquatint. zinc plate.*

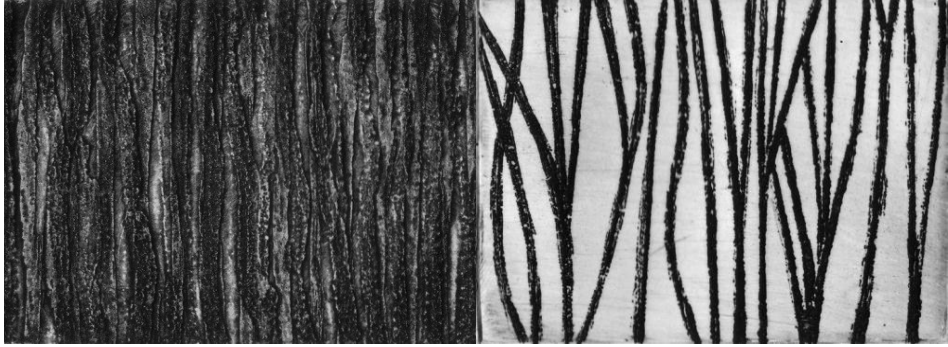
bottom: 'Tree Rhythm Flow'.
Mougamarra Reserve. Ku-ring-ai Chase National
Park.
6"X4" B&W. sugarlift. aquatint. zinc plate.



Left row: 'Alpha'.
Central Australia.
Each print: 6"X 4". sepia. sugarlift.
aquatint. zinc plate.

Right row: 'Omega'.
Central Australia.
Each print: B&W. 6"X 4". sepia. sugarlift.
aquatint. zinc plate.

As presented each *Alpha* and *Omega* pairing are meant to be printed side by side on the same piece of printmaking paper to form a couplet. The empty white space (that can be extended) between the two images can be considered as representing the totality of *everything* – including time and space - that is between the very beginning and the very end of the Universe. (Of course each etching can also exist in its own right as a single independent image).



'Reeds.'

'Reeds.'

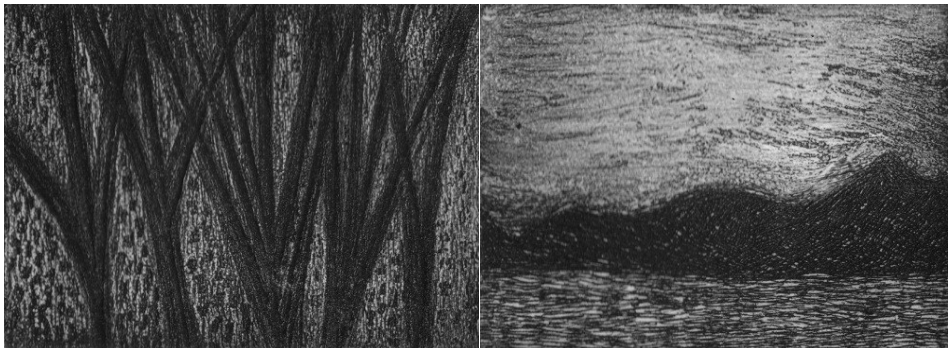
Cooks River.

All etchings are either B&W, sepia. 10cm X 7cm. aquatint. sugarlift. zinc plate. '...the sky is blue...' also incorporates blue.



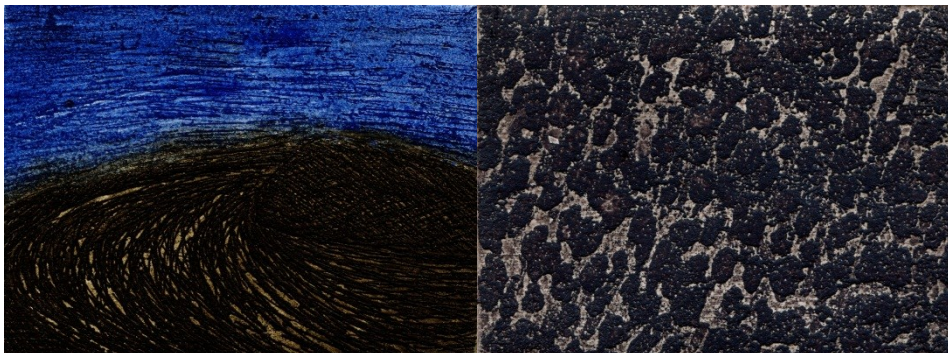
'Riverbend.'

'Fallen Angel.'



'Under the Shade.'

'The River is Calm.'



'...the sky is blue...'

'Dance of the Dead.'



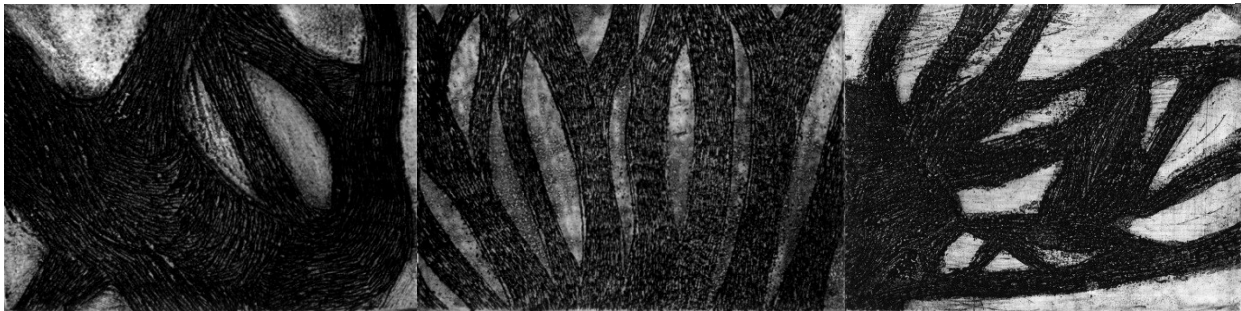
'Mangrove.'



'Reeds.'

'Reeds of Life.'

'Rhythm of Life.'



'Hades.' (Twisted tree).

'Purgatory'. (Row of Trees).

'Trees with Suffering Souls.'

All etchings are either *B&W, sepia.10cm X 7cm.aquatint. sugarlift. zinc plate.* As for the etching '*....the sky is blue...*' this two tone-image is based on a remark in Marcel Proust's '*Remembrance of Things Past.*' The woods may be dark but one can look heavenwards for inspiration and hope.